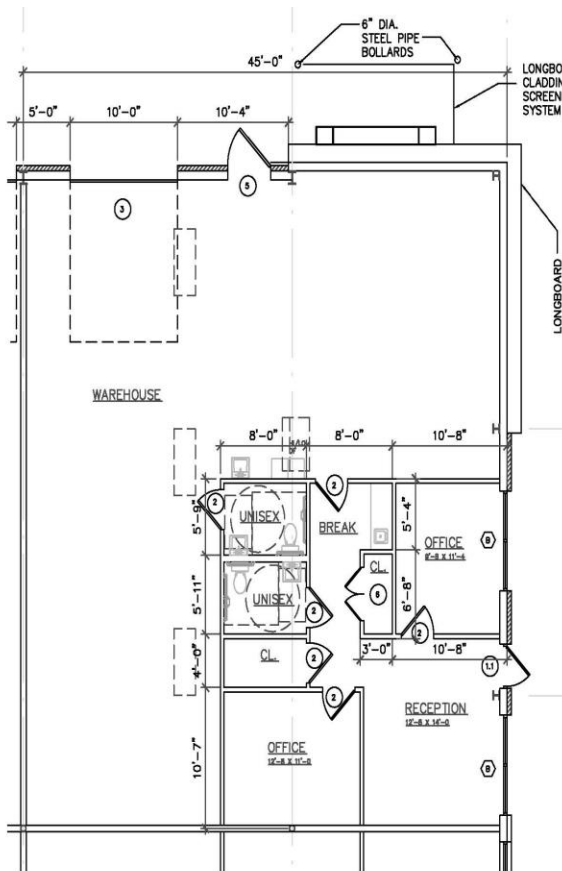


2450 Freedom Parkway, Suite 200, Cumming, GA 30041
2,250SF w/3 offices and 2 restrooms, fully temperature controlled



DEVELOPMENT FEATURES:

- Available suite sizes range from 1000 to 2750 square feet
- Suite interiors include one or two offices and an ADA restroom
- Suites are fully or partially temperature controlled
- Ground level roll-up door access
- Commercial/light industrial zoning
- High-speed internet access available

Management Features:

- Highest quality day-to-day services
- In-house property management personnel
- On-site facilities manager
- Standardized lease agreements
- Preventative maintenance programs