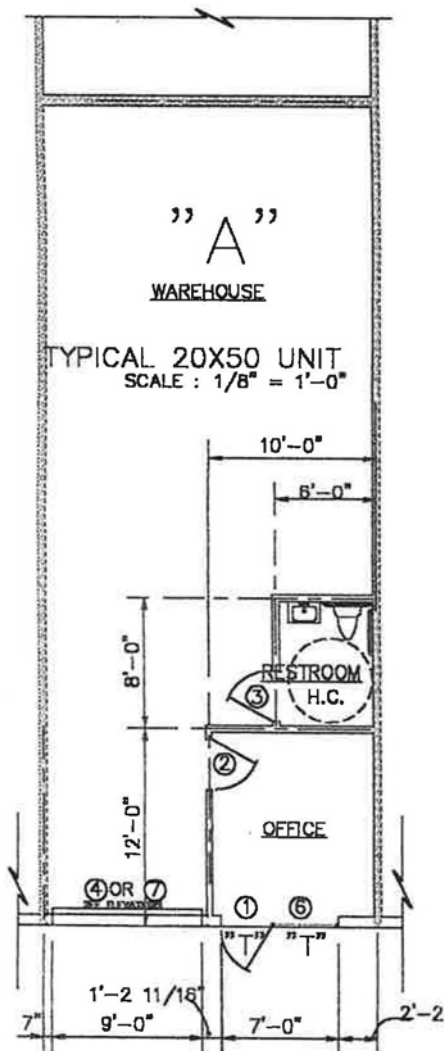


485 Buford Drive, Suite 205, Lawrenceville, GA 30046
1,000SF w/1 office and 1 restroom, partially temperature controlled
AVAILABLE FEBRUARY 1, 2021



DEVELOPMENT FEATURES:

- Available suite sizes range from 1000 to 3000 square feet
- Suite interiors include one or two offices and an ADA restroom
- Suites are partially or fully temperature controlled
- Ground level roll-up door access
- Commercial/light industrial zoning
- High-speed internet access available
- Common area loading dock

Management Features:

- Highest quality day-to-day services
- In-house property management personnel
- On-site facilities manager
- Standardized lease agreements
- Preventative maintenance programs